

Assembling the RP701



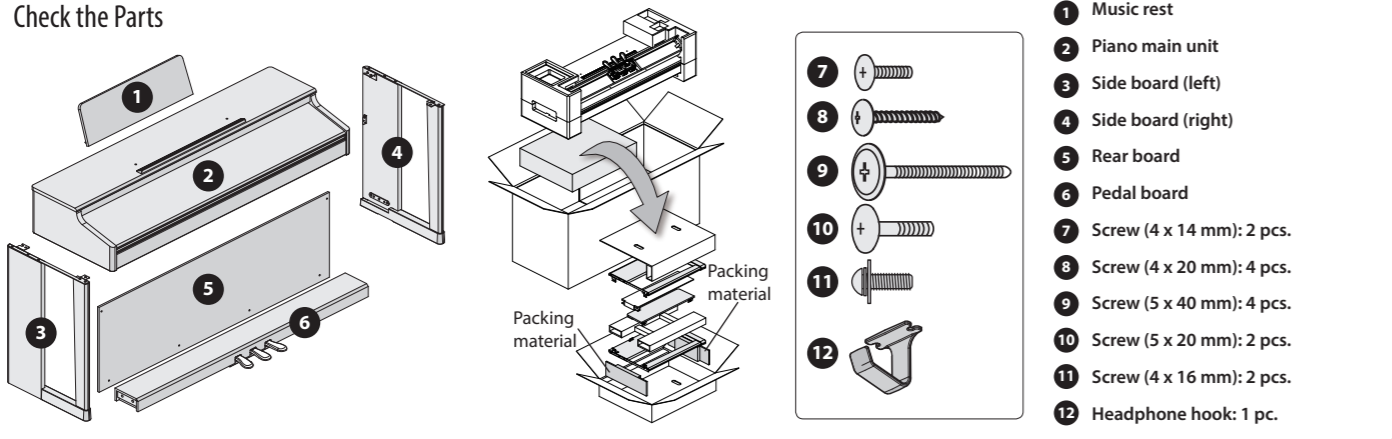
To assemble this product correctly, carefully read these instructions before assembly. Keep these instructions nearby so that you can immediately refer to them when necessary.

Caution when assembling the unit

- Make sure that another person is on hand to help with the assembly and setup.
- Lift the piano carefully—all the while keeping it level.
- Prepare an area in which you can perform the assembly safely.
- If necessary, spread out a blanket or similar material to prevent the piano or floor from being scratched during assembly.
- Place the unit at a location that is level and sure to remain stable. The unit must never be placed on top of deep-pile carpet. Otherwise, you risk causing damage to the pedals due to instability and unnecessary movement.
- Make sure to keep screws and any other small parts in a safe location that is out of the reach of small children, so such small parts won't accidentally get swallowed.
- Be very careful, when you assemble and move the piano, to make sure that you do not drop it on your hands or feet.
- Do not use a power tool (e.g., an electric screwdriver) to assemble the piano. You risk damaging or stripping the screws.
- All screws should be tightened provisionally first, then tightened later. To tighten a screw provisionally, screw it in until about half of its length is no longer visible. For a successful assembly, compensate for any warping while you tighten the screws.
- Be careful not to pinch the pedal cord during assembly.
- Do not place the piano main unit directly on the floor. Doing so will damage the bottom panel case and the connectors on the bottom of the piano main unit.



Check the Parts

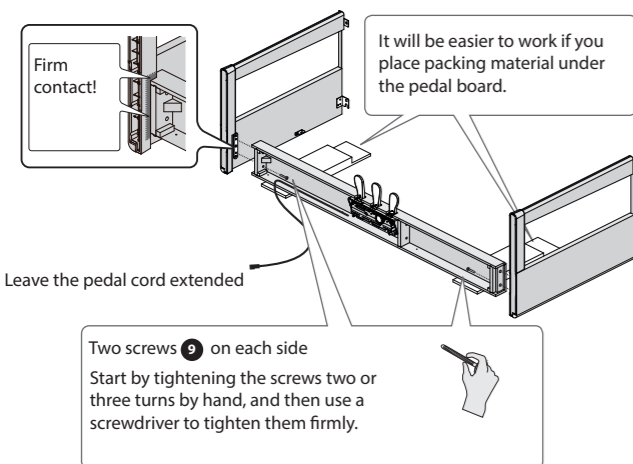


1. Assembling the Stand

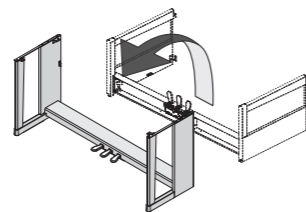
1. As shown in the illustration, place the left and right side boards (3) next to the pedal board (6) so that the metal brackets are on the inside. Tighten the screws (9) (4 locations) two or three turns by hand, and then use a screwdriver to tighten them firmly.

* If you don't begin by hand-tightening the screws, the screw threads might become damaged, making assembly impossible.

* Place the side boards firmly in contact with the side and bottom of the pedal board, and fasten with the screws.

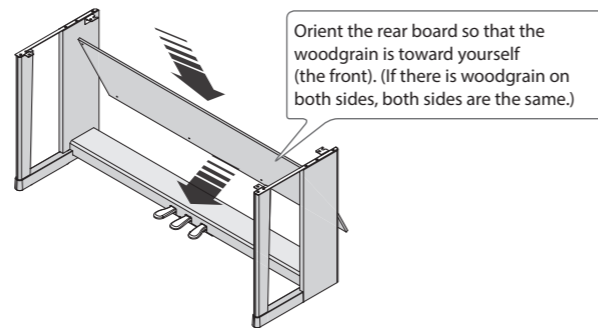


2. Holding the left and right side boards, raise them so that the pedal board (6) is not twisted.



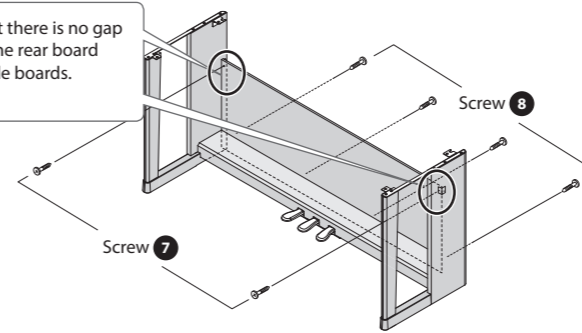
3. Place the rear board (5) as shown below and adjust the screw holes of the rear board and the pedal board (6).

* If the rear board is difficult to place in position, slightly loosening the screws (9) will let it fit more easily. Retighten the screws that you loosened.



4. Use screws (7) to fasten the rear board (5) from the front to the metal brackets on the inside of the side boards. Then use screws (8) to fasten the rear board to the pedal board (6) from behind.

Ensure that there is no gap between the rear board and the side boards.



5. Tighten the screws while correcting any skew in the overall assembly.

* When attaching the rear board, before tightening the screws, adjust things as necessary at all the points where there are screws so as to assure that the rear board is aligned in parallel with the pedal board.

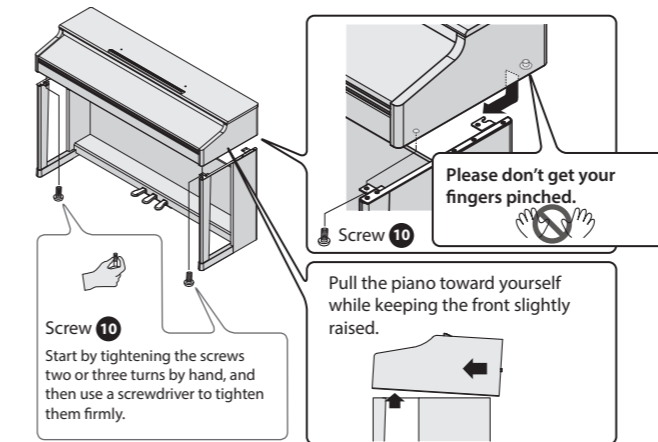
2. Install the Piano Unit onto the Stand

1. Align the screws on the bottom of the piano main unit (one each at left and right) with the metal brackets on the side boards, and while keeping the front of the piano slightly raised, pull it toward yourself to engage the screws in the metal brackets.

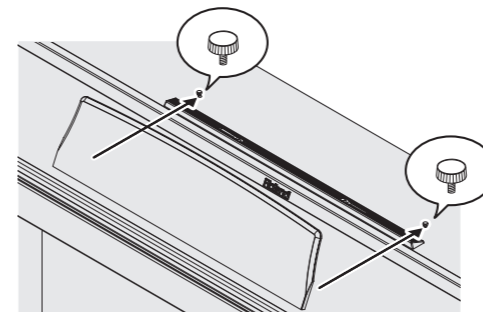
* When handling the piano, firmly grasp it. Be careful, so you do not get your fingers pinched.

2. Place the piano unit on the stand, hand-tighten the screws (10) (2 locations) two or three turns, and then use a screwdriver to tighten them firmly.

* If you don't begin by hand-tightening the screws, the screw threads or the insert nut might be damaged, making assembly impossible.



3. Loosen the music rest screws slightly (2–3 mm), insert the music rest brackets between the screws and the body of the piano, and turn the screws to secure the music rest while using one hand to support the music rest.

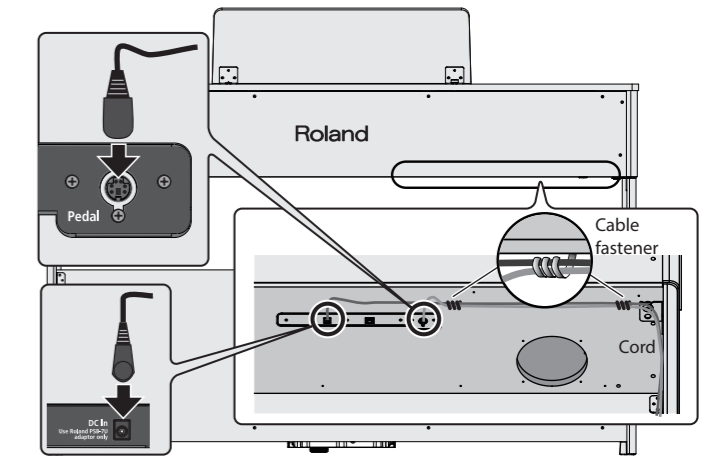


When attaching the music rest, make sure that it is firmly inserted all the way toward the back, and use your hand to support the music rest so that it does not fall. Also take care not to pinch your hand.

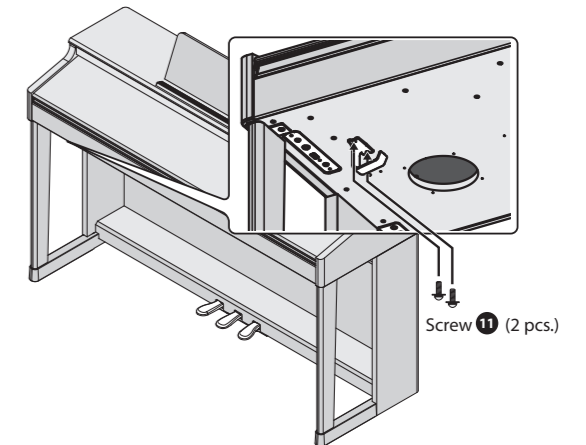
* Do not apply excessive force to the music rest.

* If you need to remove the music rest, loosen the screws while using one hand to support the music rest. Detach the music rest, and then firmly retighten the screws.

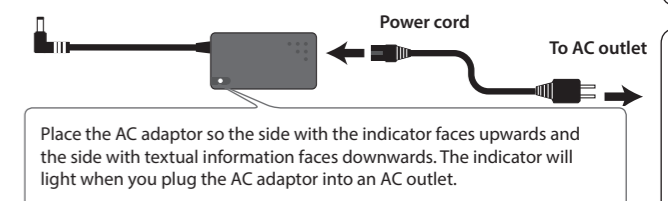
4. Connect the AC adaptor to the DC In jack on the back of the unit, and connect the pedal cord to the Pedal jack. Use the cable fasteners on the bottom of the unit to secure the power cord and pedal cord.



5. Use screws (11) to fasten the headphone hook (12).

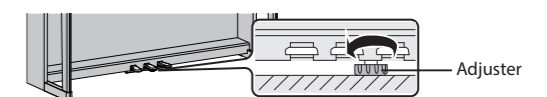


6. Connect the supplied AC adaptor and power cord.



7. Adjust the Adjuster under the pedal.

Turn the adjuster to lower it until the adjuster is in firm contact with the floor. In particular, when you've placed the piano on carpet, you must turn the adjuster until it is pressing firmly against the floor.



* The pedal may be damaged if there is a gap between the adjuster and the floor.

When moving or transporting

Before moving this unit, close the keyboard cover and remove the music rest. Next, disconnect the AC adaptor and rotate the adjuster under the pedals to raise it. With the assistance of another person, lift the unit horizontally, and carry it with care to avoid pinching your hand or dropping the unit on your foot. When you have decided where to place the unit, rotate the adjuster so that it contacts the floor.